

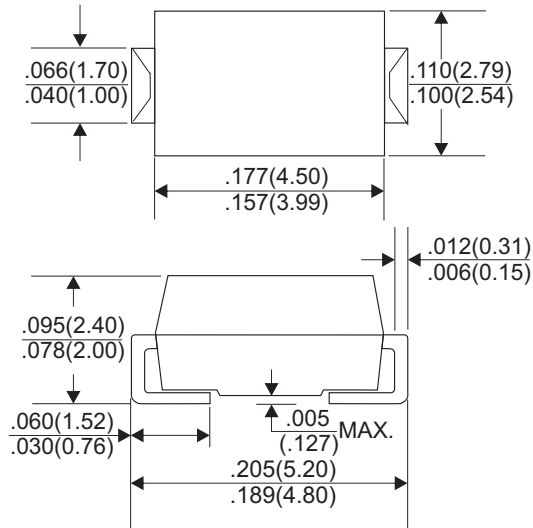


ES1AAL THRU ES1JAL

SURFACE MOUNT SUPER FAST RECOVERY RECTIFIERS

Reverse Voltage - 50 to 600 Volts Forward Current - 1.0 Ampere

SMAL



Dimensions in inches and (millimeters)

FEATURES

- * Glass passivate device
- * Ideal for surface mounted applications
- * Low reverse leakage
- * Metallurgically bonded construction
- * High temperature soldering guaranteed:
250°C/10 seconds 0.375"(9.5mm)lead length,
5 lbs.(2.3kg) tension

MECHANICAL DATA

- * Case: JEDEC SMAL molded plastic
- * Terminals: Plated axial leads, solderable per MIL-STD-750, Method 2026
- * Polarity: Color band denotes cathode end
- * Mounting Position: Any

MAXIMUM RATINGS AND ELECTRICAL CHARACTERISTICS

Rating 25°C ambient temperature unless otherwise specified.
Single phase half wave, 60Hz, resistive or inductive load.
For capacitive load, derate current by 20%.

TYPE NUMBER	ES1AAL	ES1BAL	ES1CAL	ES1DAL	ES1EAL	ES1GAL	ES1JAL	UNITS
Maximum Recurrent Peak Reverse Voltage	50	100	150	200	300	400	600	V
Maximum RMS Voltage	35	70	105	140	210	280	420	V
Maximum DC Blocking Voltage	50	100	150	200	300	400	600	V
Maximum Average Forward Rectified Current .375"(9.5mm) Lead Length at Ta=55°C	1.0							A
Peak Forward Surge Current, 8.3 ms single half sine-wave superimposed on rated load (JEDEC method)	30							A
Maximum Instantaneous Forward Voltage at 1.0A	0.95			1.3		1.7		V
Maximum DC Reverse Current Ta=25°C	5.0							µA
at Rated DC Blocking Voltage Ta=100°C	50							µA
Maximum Reverse Recovery Time (Note 1)	35							nS
Typical Junction Capacitance (Note 2)	15							pF
Operating and Storage Temperature Range T _J , T _{STG}	-65 — +150							°C
Marking code	ES1A	ES1B	ES1C	ES1D	ES1E	ES1G	ES1J	

NOTES:

1. Reverse Recovery Time test condition: IF=0.5A, IR=1.0A, IRR=0.25A
2. Measured at 1MHz and applied reverse voltage of 4.0V D.C.

RATING AND CHARACTERISTIC CURVES (ES1AAL THRU ES1JAL)

FIG.1-TYPICAL FORWARD CHARACTERISTICS

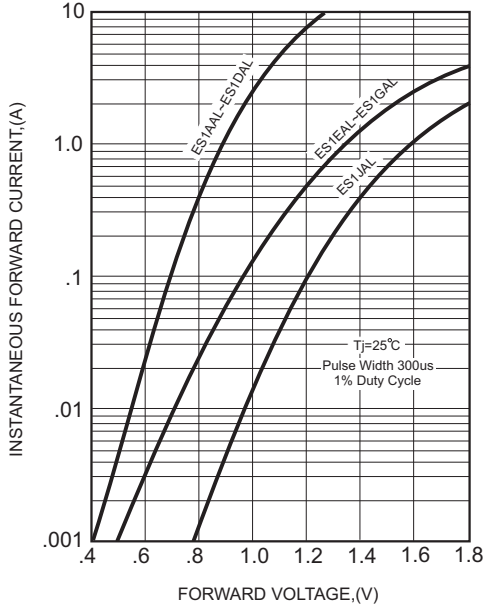


FIG.2-TYPICAL FORWARD CURRENT DERATING CURVE

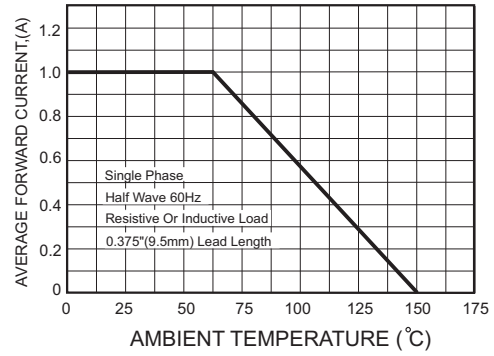
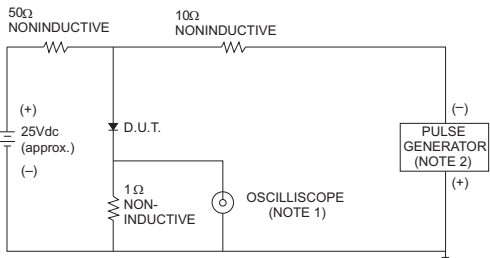


FIG.3- TEST CIRCUIT DIAGRAM AND REVERSE RECOVERY TIME CHARACTERISTICS



NOTES: 1. Rise Time= 7ns max., Input Impedance= 1 megohm, 22pF.
2. Rise Time= 10ns max., Source Impedance= 50 ohms.

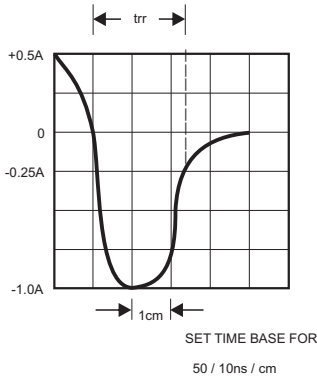


FIG.4-MAXIMUM NON-REPETITIVE FORWARD SURGE CURRENT

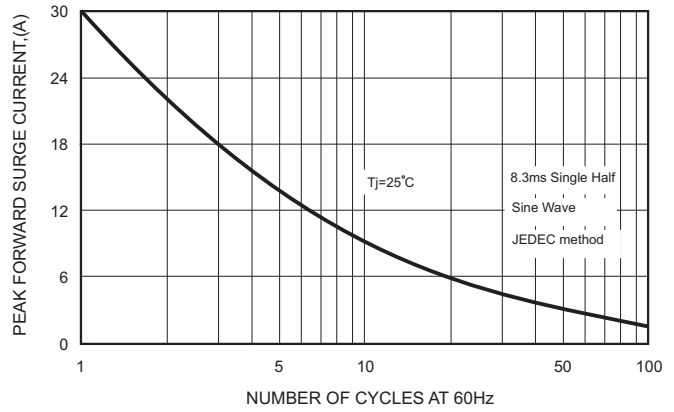


FIG.5-TYPICAL JUNCTION CAPACITANCE

